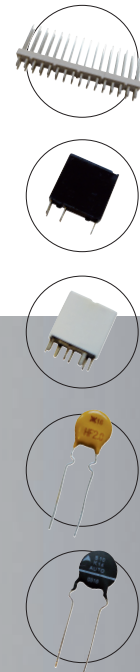
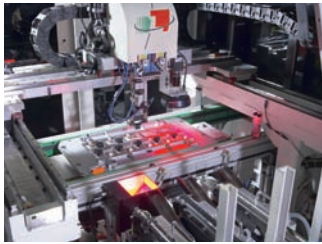


PLUS 13 - C II

Component Assembly Machine (with Linear Motors)

LAZPIUR



RANGE



AUTOMOTIVE

ELECTRONICS

Standard Features

Graphic user interface touch screen integrated to frame.

Additional push-button panel.

Up to 4 feeders and grippers available.

Network capability.

Insertion program storage in flash memory.

Based on gantry system X-Y with linear motors.

Pass-through segmented conveyor.

Active clinching (standard solution).

Identification and codification systems via electronic cards.

Compliant with CE safety standards.

Technical Characteristics (For PLUS 13 Component Assembly Machine)

Insertion Rate

1.8 sec. Without vision correction, with 1 gripper & 1 Assembly Head.

2.1 sec. With vision inspection, with 1 gripper & 1 Assembly Head.

1.7 sec. Without vision correction, with 1 gripper & 2 Assembly Heads.

2 sec. With vision inspection, with 1 gripper & 2 Assembly Heads.

Dimensions

Length 2300

Depth 2300

Height 2000

Weight 1700 kg

Electrical requirements

400 or 480 VAC.

50 or 60 Hz. Frequency.

Phases: 3 PH + (N) + PE.

Power: 5 KVA.

- Max. PCB Dimensions: 500mm x 250mm.
- Adjustable track height 900 ±35mm.

- X-Y assembly system type gantry with ball spindle and servomotor actuated drive.

Five-axis gripper system

X, Y, W (turn), R (gripper)

Z-axis pneumatic movement.

Programmable gripping range 2 ÷ 50mm.

1st option: Z, W axis (turn) servodriver and vacuum valve system, including stress control.

2nd option: Z, W axis (turn) and R (gripper) servodriver, including stress control.

3rd option: Z, W axis (turn) and pneumatic gripper, including stress control.

- Capable of operating on the machine with 2 insertion heads.
- Feeders: Capability to use 4 loaders with quick-change system (changeover time 45/60 sec per loader).

Type of feeders

Relays / magazine, tube feeder.

Resistors / diodes, radial feeders.

Capacitors / Shunt / poly-switch / radial components, radial feeders.