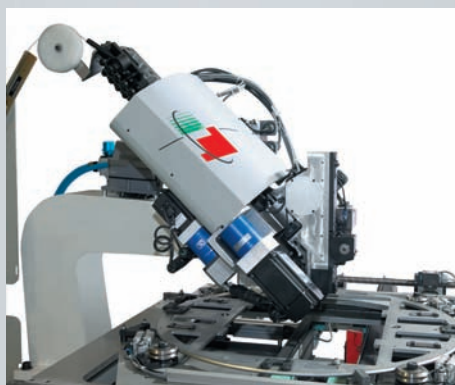
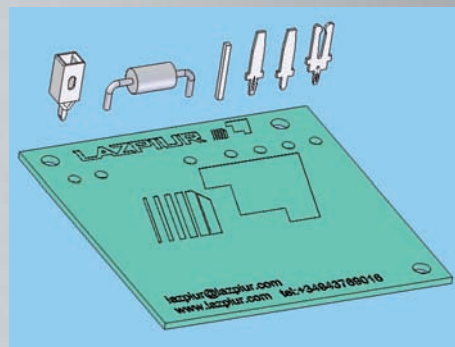
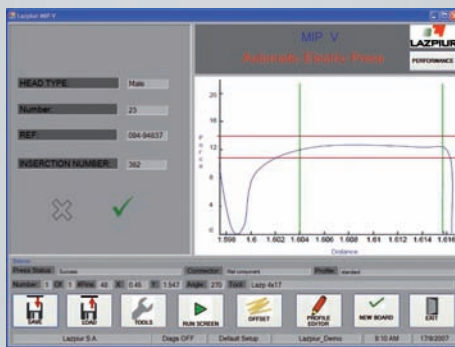
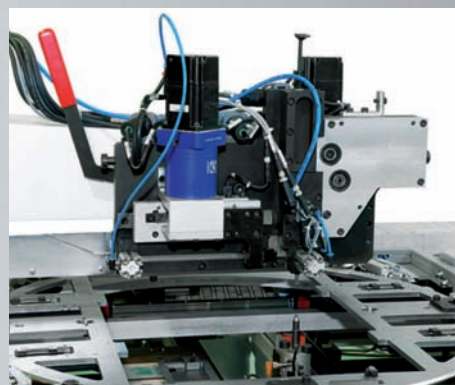


POLYVALENT INSERTION MACHINE with Mechatronic Head

LAZPIUR



Short-pin mechatronic insertion head



Male mechatronic insertion head

RANGE



AUTOMOTIVE

ELECTRONICS

Standard Features

Graphic user interface touch screen integrated to frame.
Network capability.
Insertion program storage in memory flash.
Machine base with X-Y coordinates.
Double conveyor belt (pallet entry and exit).
Work performed on transport pallets.
Lower anvil system with control of inserted components, including quick-change system.
Insertion head tying system with quick change (immediate insertion head interchangeability).
Capable of operating with different head types.
Identification and codification systems via electronic cards.
Reel assembly for feeding of components.
Machine bases with the possibility of making complete insertion lines.
Force control for PRESS-FIT insertion.
Run-time insertion force monitoring and statistical process control.

Technical Characteristics

Insertion Rate (including insertion of component)

Table movement	0,2 sec.
Pallet loading/unloading	3 sec.
90° table turn	1,4 sec.
Conveyor belt speed	12 m/min.

Dimensions

Length	2300
Depth (Including feeding reel)	2785
Height	2350
Weight	1960 kg

- Multi-axis control equipment model Mechatrolink II and servomotor actuated drive.
- X-Y table system with ball spindle and servomotor actuated drive.
- Servo driven anvil assembly with detection control for component inserted correctly.

Interchangeable heads with quick change systems

Male terminals
Female terminals
Pins
Bussbars
Diodes (including polarity control)
Resistors (including ohmic control)

Electrical requirements

400 or 480 VAC
50 or 60 Hz. Frequency
Phases: 3 PH + (N) + PE
Power: 4 KVA

- Motorized feeding roll with components manufactured in chain and wound in reels.

Options

- Bar code reader.
- Traceability control.

